

Case Study 13

Perth Airport Train Line

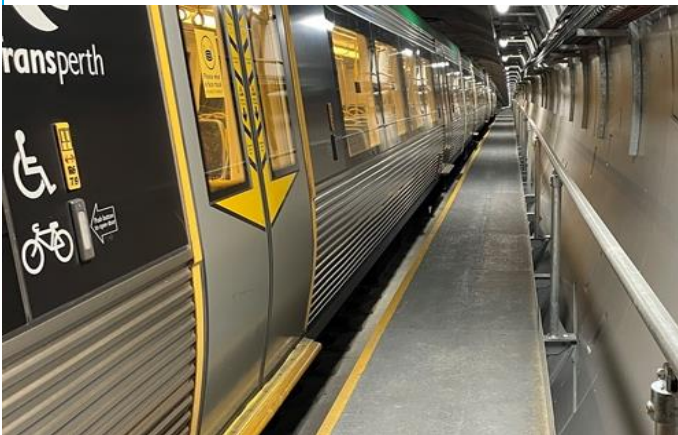
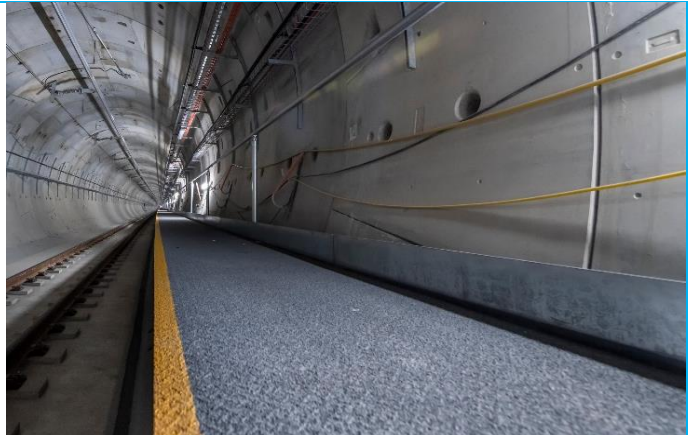
How Ferro-Clean provided safety products for the new Perth Airport train tunnel under the Swan River!

The Project

The new Perth Airport Line was officially opened yesterday by the Prime Minister and WA Premier, taking the first train ride on the \$1.86 billion jointly funded project.

Ferro-Clean has been involved in the train tunnel project, providing high quality, custom solutions to provide safety products that stand out!

Ferro-Clean has been providing protective coatings for safety products in Western Australia since 1966 and has successfully completed many government funded project.



The Challenge

Ferro-Clean solved a key issue for the Metronet project by applying protective coatings with a non-slip finish on the safety walkway that runs beside the track.

This walkway is to be used by passengers and crew as a means of escape if the train needs to stop mid-way through the tunnel in an emergency situation.

The anti-slip material and reflective yellow safety line ensures people will not slip off the platform, while the protective coatings give the tunnel platforms a long lifespan and protect them from the elements.

The Solution

To provide for the clients' needs, Ferro-Clean developed an innovative solution to apply the non-slip material and protective coatings with great consistency.

Ferro-Clean's process incorporated a painted yellow reflective strip on the edge facing the rails. This yellow stripe can be seen as you travel through the train tunnel.

The 9000 panels were completed on schedule to the client's specifications – thanks to Ferro-Clean. When you travel on the train through the new Perth Airport Line, be sure to look for the yellow line in the tunnel!



Photos courtesy of WA Government.

We look forward to helping you with your next project!

Would you like
Ferro-Clean to call you?

Do you want to email
Ferro-Clean?

Need more information
about Ferro-Clean?

Abrasive Blasting & Protective Coatings Application

| Structural Steel | Handrail & Safety | Componentry | Platework | Pipework & Ducting | Fireproofing |